

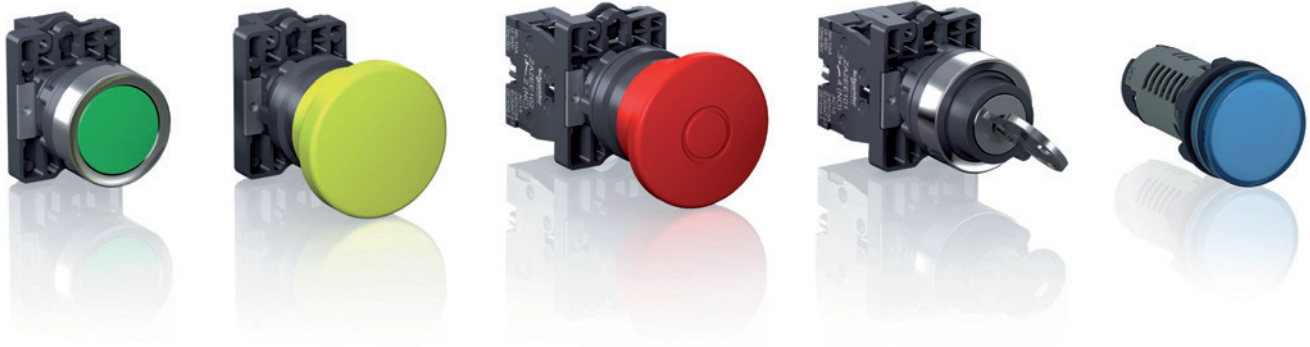
Control and signaling

Harmony Easy XA2

Ø 22 mm, plastic pushbuttons, switches and pilot lights

Catalog

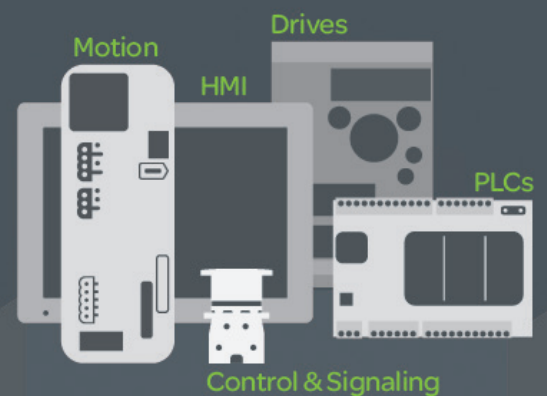
April 2016



Introducing the **Easy line**

Essential automation & control products

When just enough is just right!



Schneider
Electric

General contents

Harmony™ Easy XA2

■ General presentation	page 2
Selection guide	page 4
■ General	
□ Presentation	page 6
□ Description	page 7
■ References	
□ Spring return pushbuttons	page 9
□ Mushroom head pushbuttons, spring return	page 9
□ Pushbuttons, push-push	page 10
□ Emergency switching off pushbuttons, push-pull and turn to release.....	page 10
□ Selector switches, with standard handle or with long handle.....	page 11
□ Key switches.....	page 11
□ Illuminated pushbuttons, flush push with integral LED	page 12
□ Bulbs and associated accessories for illuminated pushbuttons	page 12
□ Contact functions for all XA2 pushbuttons and switches	page 12
□ Pilot lights	page 13
□ Product reference index	page 14

Harmony Easy XA2:
 - modular, plastic pushbuttons and switches with metallic-look ring,
 - complete, plastic pilot lights with integral LED

Fit for purpose

All the products composing the Harmony™ Easy XA2 range have been designed to be used in numerous control and signaling applications:

- > customers can easily select the key functions for standard applications
- > their diameter, Ø 22 mm / 0.866 in. makes them suitable for standard OEM and panel builder applications.
- > with plastic material, they provide a solution for industrial applications demanding a high resistance to chemical agents.

Ease and comfort of choice

The range is available in the form of complete units. It involves:

- > modular, plastic pushbuttons and switches with metallic-look ring
 The modular design allows flexible and simple setup for complete products: the right product can be chosen among various types of heads and 2 types of functions are proposed (contact and signaling)
- > complete pilot lights, provided with integral LED.

All products are fitted with screw clamp terminals allowing fast and easy connection.

Contact functions

- Pushbuttons with spring return and push-push (marked or unmarked)
- Selector switches and key switches, 2 or 3 positions
- Emergency switching off pushbuttons with push-pull and turn to release



Contact and signaling functions

- Illuminated pushbuttons with integral LED, spring return and flush push



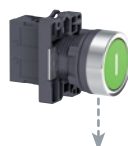
Signaling functions

- Pilot lights with integral LED



Groomed ergonomics

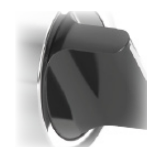
- > Metallic-look ring on pushbuttons and switches gives a modern look
- > Ergonomic curve on the selector switches allows flexible operation



Metallic-look ring



Ergonomic curve



Pushbuttons and switches with metallic-look ring design

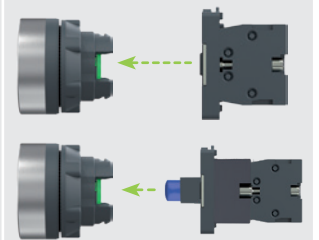
Easy installation

- > Installation of pushbuttons is simple and easy
- > Mounting by single nut to the control panel
- > Anti-rotation plate prevents the pushbutton head from rotation

- Single lock ring for mounting on control panel



- Clip-together component system for head, body, contacts, and LED light blocks



Proven robustness

- > Conforming to most demanding international standards and approvals
- > Tested and certified performance
- > Excellent resistance to mechanical shock and vibration
- > Supports extended temperature range from - 40° C to + 70° C



Helps customer to
improve the reliability

Service and availability

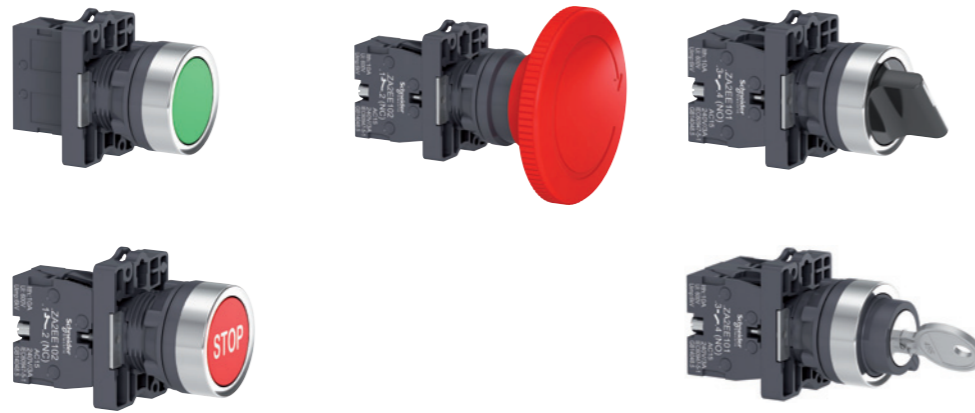
- > Supported by the service of Schneider Electric
- > Wide availability throughout an extensive distribution network

 Up to IP 54 degree of protection

Control and signaling units Ø 22

Harmony Easy XA2, plastic
Pushbuttons, switches and pilot lights

Type of products	Contact functions		
	Pushbuttons	Emergency switching off pushbuttons	Selector and key switches



Description of range	<ul style="list-style-type: none"> Pushbuttons, spring return: flush push, mushroom head, and push-push 	<ul style="list-style-type: none"> Emergency switching off pushbuttons: turn to release and push-pull 	<ul style="list-style-type: none"> Selector switches, 2 or 3-position: standard or long handle Key switches
-----------------------------	--	--	---

Features	Products	Complete units
	Shape of head	Circular

Drilling or cut-out for mounting	Ø 22 mm/0.866 in.
---	-------------------

Degree of protection	IP 54 conforming to standard IEC 60529
-----------------------------	--

International standards	IEC 60947-5-1, EN 60947-5-1, GB/T 14048.1-93, GB/14048.5-93
--------------------------------	---

Product certification	CCC, EAC
------------------------------	----------

Cabling	Screw clamp terminal connections
----------------	----------------------------------

Mounting	Panel thickness	Ø 1 to 6 mm/0.04 to 0.24 in.
-----------------	------------------------	------------------------------

Type references	XA2EA●●/EA●●●●/EC●●/XA2ER●●/EH0●●	XA2ET●●/ES●●●	XA2ED●●/EJ●●/EG●●
------------------------	--	----------------------	--------------------------

Pages	9	10	11
--------------	---	----	----

Contact and signaling functions	Signaling functions
Illuminated pushbuttons	Pilot lights



<ul style="list-style-type: none"> Illuminated pushbuttons with integral LED, spring return: flush push 	<ul style="list-style-type: none"> Pilot lights with integral LED
--	--

Features	Products	Complete units
	Shape of head	Circular

Drilling or cut-out for mounting	Ø 22 mm/0.866 in.
---	-------------------

Degree of protection	IP 54 conforming to standard IEC 60529	IP 40 conforming to standard IEC 60529
-----------------------------	--	--

International standards	IEC 60947-5-1, EN 60947-5-1, GB/T 14048.1-93, GB/14048.5-93
--------------------------------	---

Product certification	CCC, EAC
------------------------------	----------

Cabling	Screw clamp terminal connections
----------------	----------------------------------

Mounting	Panel thickness	Ø 1 to 6 mm/0.04 to 0.24 in.
-----------------	------------------------	------------------------------

Type references	XA2EW3●●●	XA2EV●●●LC, XA2EV●D●LC
------------------------	------------------	-------------------------------

Pages	12	13
--------------	----	----

Control and signaling units Ø 22

Harmony Easy XA2, plastic

Pushbuttons, switches and pilot lights

Presentation

The Harmony Easy XA2 range of Ø 22/0.866 in. plastic control and signaling units combines simplicity of installation, flexibility and robustness. It meets the requirements of the majority of industrial applications. The metallic-look ring design on the pushbuttons and switches gives them a modern look. These products are available in the form of complete units.

■ This range includes:

- Pushbuttons, selector/key switches, Emergency switching off pushbuttons for Start/Stop control of machines and installations, adjustment, and parametering (contact functions),
- Illuminated pushbuttons for control and signaling (contact functions and signaling functions),
- Pilot lights (signaling functions).

■ The pushbutton, switch (illuminated and non-illuminated) and pilot light control offer comprises:

- Flush, spring return marked and unmarked pushbuttons, mushroom head spring return pushbuttons,
- Illuminated pushbuttons, spring return, with integral LED,
- Ø 40/1.575 in., Ø 30/1.181 in., and Ø 60/2.362 in. Emergency switching off pushbuttons,
- Selector switches with standard and long handle,
- Key switches,
- Pilot lights with integral LED,
- Various accessories.

Installation

■ Harmony Easy XA2 products are both simple and quick to install:

- Mounting by a single nut to the control panel,
- Body/fixing collar simply clip on the head,
- Anti-loosening system for screw clamp terminals of contact blocks.

■ Type of connection:

- screw clamp terminals.

Environment

The performance features of the Harmony Easy XA2 range meets the following specifications:

■ Degrees of protection conforming to standard IEC 60529:

- IP 54 for pushbuttons and switches
- IP 40 for pilot lights

■ International standards:

- IEC 60947-5-1, EN 60947-5-1, GB/T 14048.1-93, GB/14048.5-93

■ Product certification:

- CCC, EAC

For more technical information, please refer to our website www.schneider-electric.com.

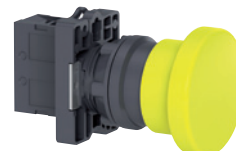
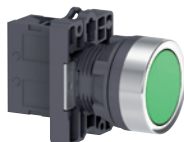
Description

The Ø 22/0.866 in. range of control and signaling units comprises complete units

Functions

Contact functions

Pushbuttons, spring return



Type of push	Flush push, unmarked	Flush push, marked	Mushroom head
Degree of protection	IP 54	IP 54	IP 54
Color	White, Black, Green, Yellow, Blue, and Red	Green, Black, White, and Red	Black, Green, Red, and Yellow
Reference	XA2EA●1/EA42	XA2EA33●1/EA43●2	XA2EC●1/EC42/ER21
Pages	9		

Pushbuttons, push-push



Type of push	Push-push
Degree of protection	IP 54
Color	White, Black, Green, Yellow, Blue, and Red
Reference	XA2EH0●1/EH042
Pages	10

Emergency switching off pushbuttons



Type of push	Turn to release and push-pull (Ø 30 mm/1.181 in., Ø 40 mm/1.575 in., Ø 60 mm/1.362 in.)
Degree of protection	IP 54
Color	Red and Black
Reference	XA2ET42/ES●42/ES422
Pages	10

Functions (continued)

Contact functions (continued)

Selector or key switches, 2 or 3-position



Type of push	Standard handle	Long handle	Key
Degree of protection	IP 54	IP 54	IP 54
Reference	XA2ED●●	XA2EJ●●	XA2EG21/EG●3
Page	11		

Combined functions: contact and signaling

Illuminated pushbuttons, spring return



Type of push	Flush push
Degree of protection	IP 54
LED	Integral LEDs, 24, 220-230 or 380-400 V
Color	White, Green, Red, Yellow, and Blue
Reference	XA2EW3●B1/3●M1/ 3●Q1
Pages	12

Signaling functions

Pilot lights



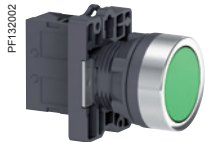
Degree of protection	IP 40
LED	Integral LEDs, 24, 110, 220-230 or 380-400 V
Color	White, Green, Red, Yellow, and Blue
Reference	XA2EV●●LC/EV●D●LC
Pages	13

Control and signaling units Ø 22

Harmony Easy XA2, plastic

Spring return pushbuttons, marked and unmarked

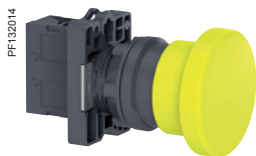
Mushroom head pushbuttons, spring return



XA2EA31



XA2EA4342



XA2EC51

Spring return pushbuttons with flush push

Shape of head	Type of contacts		Color of push	Marking	Reference	Weight kg/lb
	N/O	N/C				
Unmarked						
	1	-	White	-	XA2EA11	0.032/0.071
			Black	-	XA2EA21	0.032/0.071
			Green	-	XA2EA31	0.032/0.071
			Yellow	-	XA2EA51	0.032/0.071
			Blue	-	XA2EA61	0.032/0.071
-	1	Red	-	XA2EA42	0.032/0.071	
Marked						
	1	-	Green	"I"	XA2EA3311	0.032/0.071
	1	-	Black	"↑"	XA2EA3351	0.032/0.071
	1	-	White	"↑"	XA2EA3341	0.032/0.071
	-	1	Red	"O"	XA2EA4322	0.032/0.071
	-	1	Red	"STOP"	XA2EA4342	0.032/0.071

Mushroom head pushbuttons, spring return

Shape of head	Type of contacts		Color of push	Diameter Ø (mm)/in.	Reference	Weight kg/lb
	N/O	N/C				
	1	-	Black	40/1.575	XA2EC21	0.052/0.115
	1	-	Green	40/1.575	XA2EC31	0.052/0.115
	-	1	Red	40/1.575	XA2EC42	0.052/0.115
	1	-	Yellow	40/1.575	XA2EC51	0.052/0.115
	1	-	Black	60/2.362	XA2ER21	0.058/0.128

Note: Please refer to our website www.schneider-electric.com for information on dimensions

Control and signaling units Ø 22

Harmony Easy XA2, plastic


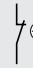

Pushbuttons, push-push

Emergency switching off pushbuttons

PF132017






XA2EH021

Pushbuttons, push-push with flush push					
Shape of head	Type of contacts	Color of push	Reference	Weight kg/lb	
	 N/O	 N/C			
	1	–	White	XA2EH011	0.04/0.088
	1	–	Black	XA2EH021	0.04/0.088
	1	–	Green	XA2EH031	0.04/0.088
	–	1	Red	XA2EH042	0.04/0.088
	1	–	Yellow	XA2EH051	0.04/0.088
	1	–	Blue	XA2EH061	0.04/0.088

PF132022



XA2ET42

Emergency switching off pushbuttons						
Shape of head	Type of push	Type of contacts	Color	Diameter Ø (mm)/in.	Reference	Weight kg/lb
		 N/C				
	Push-pull	1	Red	40/1.575	XA2ET42	0.088/0.194
	Turn to release	1	Red	30/1.181	XA2ES442	0.056/0.123
			Red	40/1.575	XA2ES542	0.058/0.128
			Red	60/2.362	XA2ES642	0.064/0.141
			Black	30/1.181	XA2ES422	0.056/0.123

Note: Please refer to our website www.schneider-electric.com for information on dimensions

Control and signaling units Ø 22

Harmony Easy XA2, plastic

Selector switches, with standard or long handle

Key switches

PF132031



XA2ED53

Selector switches, with standard handle or with long handle						
Shape of head	Type of push	Type of contacts		Number and type of positions	Reference	Weight kg/lb
		N/O	N/C			
	Standard handle	1	–	2 - stay put	XA2ED21	0.04/0.088
		1	1	2 - stay put	XA2ED25	0.054/0.119
		2	–	3 - stay put	XA2ED33	0.054/0.119
		2	–	3 - spring return from 2 sides	XA2ED53	0.054/0.119
		1	–	2 - spring return	XA2ED41	0.041/0.090
	Long handle	1	–	2 - stay put	XA2EJ21	0.041/0.090
		1	1	2 - stay put	XA2EJ25	0.041/0.090
		2	–	3 - stay put	XA2EJ33	0.055/0.121
		2	–	3 - spring return from 2 sides	XA2EJ53	0.055/0.121

PF132041



XA2EG03

Key switches						
Shape of head	Type of push	Type of contacts		Number and type of positions	Reference	Weight kg/lb
		N/O	N/C			
	Key	1	–	2 - stay put, one side pull-out	XA2EG21	0.064/0.141
		2	–	2 - stay put, two sides pull-out	XA2EG43	0.078/0.172
		2	–	2 - spring return, one side pull-out	XA2EG63	0.078/0.172
		2	–	3 - spring return from 2 sides, middle pull-out	XA2EG73	0.078/0.172
		2	–	3 - stay put, middle pull-out	XA2EG33	0.078/0.172
		2	–	3 - stay put, 3 sides pull-out	XA2EG03	0.078/0.172

Note: Please refer to our website www.schneider-electric.com for information on dimensions

Control and signaling units Ø 22

Harmony Easy XA2, plastic
Illuminated pushbuttons with flush push

Bulbs for illuminated pushbuttons

Contact functions for all XA2 pushbuttons and switches



XA2EW36B1



DL1LED244



DL1LED246



ZB5AZ905

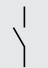
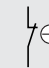



ZB5AZ902



ZA2EE102

Illuminated pushbuttons with integral LED

Shape of head	Type of push	Supply voltage V	Type of contacts	Color	Reference	Weight kg/lb
			 N/O  N/C			
	Flush push	~ / ≍ 24	1	White	XA2EW31B1	0.056/0.123
				Green	XA2EW33B1	0.056/0.123
				Red	XA2EW34B1	0.056/0.123
				Yellow	XA2EW35B1	0.056/0.123
				Blue	XA2EW36B1	0.056/0.123
			1	Red	XA2EW34B2	0.056/0.123
		~ 220-230	1	White	XA2EW31M1	0.064/0.141
				Green	XA2EW33M1	0.064/0.141
				Red	XA2EW34M1	0.064/0.141
				Yellow	XA2EW35M1	0.064/0.141
Blue	XA2EW36M1			0.064/0.141		
	1	Red	XA2EW34M2	0.056/0.123		
~ 380-400	1	White	XA2EW31Q1	0.064/0.141		
		Green	XA2EW33Q1	0.064/0.141		
		Red	XA2EW34Q1	0.064/0.141		
		Yellow	XA2EW35Q1	0.064/0.141		
		Blue	XA2EW36Q1	0.064/0.141		
	1	Red	XA2EW34Q2	0.056/0.123		

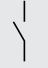
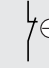
Bulbs with BA 9s base fitting and associated accessories

Description	Characteristics	Color	Sold in lots of	Unit reference	Weight kg/lb
LEDs	~ / ≍ 24 V	White	10	DL1LED241	0.002/0.004
		Green	10	DL1LED243	0.002/0.004
		Red	10	DL1LED244	0.002/0.004
		Yellow	10	DL1LED245	0.002/0.004
		Blue	10	DL1LED246	0.002/0.004

Description	Application	Sold in lots of	Unit reference	Weight kg/lb
Bezel tool	Tightening head fixing nut	1	ZB5AZ905	0.016/0.035
Anti-rotation plate	Prevents head from rotation	10	ZB5AZ902	0.008/0.018

Contact functions (for all XA2 pushbuttons and switches)

Screw clamp terminal connections

Description	To be used with	Type of contacts	Sold in lots of	Unit reference	Weight kg/lb
		 N/O  N/C			
Contact blocks	All XA2 pushbuttons and switches	1 -	1	ZA2EE101	0.014/0.031
		- 1	1	ZA2EE102	0.014/0.031

Note: Please refer to our website www.schneider-electric.com for information on dimensions

Control and signaling units Ø 22

Harmony Easy XA2, plastic
Pilot lights with integral LED

PF132065



XA2EV●●5LC

PF132067



XA2EV●●3LC

Pilot lights with integral LED

Shape of head	Supply voltage V	Color of lens	Sold in lots of	Reference	Weight kg/lb
●	~ / ≍ 24	White	10	XA2EVB1LC	0.017/0.037
		Green	10	XA2EVB3LC	0.017/0.037
		Red	10	XA2EVB4LC	0.017/0.037
		Yellow	10	XA2EVB5LC	0.017/0.037
		Blue	10	XA2EVB6LC	0.017/0.037
		~ 110	~ 110	White	10
Green	10			XA2EVF3LC	0.017/0.037
Red	10			XA2EVF4LC	0.017/0.037
Yellow	10			XA2EVF5LC	0.017/0.037
Blue	10			XA2EVF6LC	0.017/0.037
≍ 110	≍ 110			White	10
		Green	10	XA2EVFD3LC	0.017/0.037
		Red	10	XA2EVFD4LC	0.017/0.037
		Yellow	10	XA2EVFD5LC	0.017/0.037
		Blue	10	XA2EVFD6LC	0.017/0.037
		~ 220-230	~ 220-230	White	10
Green	10			XA2EVM3LC	0.017/0.037
Red	10			XA2EVM4LC	0.017/0.037
Yellow	10			XA2EVM5LC	0.017/0.037
Blue	10			XA2EVM6LC	0.017/0.037
≍ 220	≍ 220			White	10
		Green	10	XA2EVMD3LC	0.017/0.037
		Red	10	XA2EVMD4LC	0.017/0.037
		Yellow	10	XA2EVMD5LC	0.017/0.037
		Blue	10	XA2EVMD6LC	0.017/0.037
		~ 380-400	~ 380-400	White	10
Green	10			XA2EVQ3LC	0.017/0.037
Red	10			XA2EVQ4LC	0.017/0.037
Yellow	10			XA2EVQ5LC	0.017/0.037
Blue	10			XA2EVQ6LC	0.017/0.037

Note: Please refer to our website www.schneider-electric.com for information on dimensions

D			
DL1LED241	12	XA2EVFD5LC	13
DL1LED243	12	XA2EVFD6LC	13
DL1LED244	12	XA2EVM1LC	13
DL1LED245	12	XA2EVM3LC	13
DL1LED246	12	XA2EVM4LC	13
		XA2EVM5LC	13
		XA2EVM6LC	13
X		XA2EVMD1LC	13
XA2EA11	9	XA2EVMD3LC	13
XA2EA21	9	XA2EVMD4LC	13
XA2EA31	9	XA2EVMD5LC	13
XA2EA42	9	XA2EVMD6LC	13
XA2EA51	9	XA2EVQ1LC	13
XA2EA61	9	XA2EVQ3LC	13
XA2EA3311	9	XA2EVQ4LC	13
XA2EA3341	9	XA2EVQ5LC	13
XA2EA3351	9	XA2EVQ6LC	13
XA2EA4322	9	XA2EW31B1	12
XA2EA4342	9	XA2EW31M1	12
XA2EC21	9	XA2EW31Q1	12
XA2EC31	9	XA2EW33B1	12
XA2EC42	9	XA2EW33M1	12
XA2EC51	9	XA2EW33Q1	12
XA2ED21	11	XA2EW34B1	12
XA2ED25	11	XA2EW34B2	12
XA2ED33	11	XA2EW34M1	12
XA2ED41	11	XA2EW34M2	12
XA2ED53	11	XA2EW34Q1	12
XA2EG03	11	XA2EW34Q2	12
XA2EG21	11	XA2EW35B1	12
XA2EG33	11	XA2EW35M1	12
XA2EG43	11	XA2EW35Q1	12
XA2EG63	11	XA2EW36B1	12
XA2EG73	11	XA2EW36M1	12
XA2EH011	10	XA2EW36Q1	12
XA2EH021	10		
XA2EH031	10	Z	
XA2EH042	10	ZA2EE101	12
XA2EH051	10	ZA2EE102	12
XA2EH061	10	ZB5AZ902	12
XA2EJ21	11	ZB5AZ905	12
XA2EJ25	11		
XA2EJ33	11		
XA2EJ53	11		
XA2ER21	9		
XA2ES422	10		
XA2ES442	10		
XA2ES542	10		
XA2ES642	10		
XA2ET42	10		
XA2EVB1LC	13		
XA2EVB3LC	13		
XA2EVB4LC	13		
XA2EVB5LC	13		
XA2EVB6LC	13		
XA2EVF1LC	13		
XA2EVF3LC	13		
XA2EVF4LC	13		
XA2EVF5LC	13		
XA2EVF6LC	13		
XA2EVFD1LC	13		
XA2EVFD3LC	13		
XA2EVFD4LC	13		

Schneider Electric Industries SAS

Head Office
35, rue Joseph Monier
F-92500 Rueil-Malmaison
France

www.schneider-electric.com

The information provided in this documentation contains general descriptions and/or technical characteristics of the performance of the products contained herein. This documentation is not intended as a substitute for and is not to be used for determining suitability or reliability of these products for specific user applications. It is the duty of any such user or integrator to perform the appropriate and complete risk analysis, evaluation and testing of the products with respect to the relevant specific application or use thereof. Neither Schneider Electric nor any of its affiliates or subsidiaries shall be responsible or liable for misuse of the information contained herein.

Design: Schneider Electric
Photos: Schneider Electric

DIA5ED2140104EN